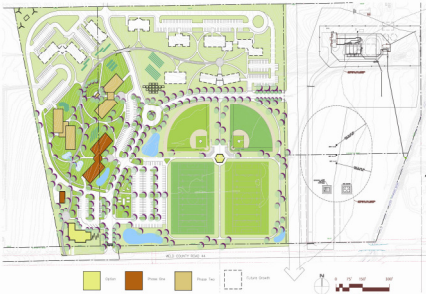


JBA 1 INCORPORATED

www.JBA1.com
JBA1@earthlink.net

Aims Community College Greeley, Colorado



Berthoud Campus Master Plan

Aims Community College purchased property along I-25 in Berthoud, Colorado to create a new campus that will offer full-service, broad-spectrum education to residents of communities in the southwest portion of the College district, as well as those in Larimer County and the many commuters along the interstate. This campus will enhance academic offerings at the site by partnering with the surrounding communities, while promoting collaboration with colleges and universities in the region, thus providing a one-stop center to develop minds and careers.

JBA Incorporated partnered with the College to develop a long range master plan for the property. The property will be a catalyst for development in the area between the cities of Berthoud and Johnstown. Its focus will be in three primary areas:

- Transfer Students
- Programs in Sustainability
- Partnering with the Community

The master plan provides a long term framework for academic and community outreach development. The plan is phased to address the logistics of opening the new campus, as well as meet needs related to future growth.

The first phase develops eight acres of the property to support a building of approximately 65,000 square feet and an initial enrollment of 750 students +/- . The remaining site was planned to assure any initial phases fit seamlessly into a collegiate environment and into the surrounding community as the campus grows.

Budget: N/A

Date: 2009

Contact: Dr. Marilyn Liddell, President
President's Office, 103 Beaty Hall
Greeley, CO 80634
(970) 339-6211
[marsiliddell@aims.edu](mailto:marsi.liddell@aims.edu)

Mr. David Laurence
Chief Facilities Officer, Physical Plant
(970) 339-6409
david.laurence@aims.edu